

المنارتين AL MANARATAIN

شركة المنارتين ومجموعة علي الشعب ذ.م.م.
AL MANARATAIN COMPANY AND ALI AL SHAAB GROUP W.L.L.
منذ 1959 ١٩٥٩

Fabrication Division



About Us

Al Manaratain's history goes way back since **1959** when the company was established by Mr. Ali Yousif Hassan as a small manual block factory and crusher plant. Under the Chairmanship of Mr. Maisan Ali Al-Khamiri, Al Manartain has expanded its business in the field of manufacturing of concrete products during this 60+ years and we have grown today as the leaders in concrete products manufacturing; covering the entire range of products with our factory and operations in the Kingdom of Bahrain and Saudi Arabia. Also now with intent for business diversification, we are venturing into **fabrication division** with the backup of skilled team with experience of various specialized projects.

Our Presence

❖ Sehla Corporate Office

Building 267, Road 83, Jidhaf Town 425

❖ Khamis Factory

Building 221, Road 389 Tashan,
Burhama 357

❖ Hafeera Factory

Gate 4, Building 1228, Road 5524, Hafeera 995

❖ Aker Factory

Building 696, Road 2512, Al Aker 625

❖ Mina Salman (Fabrication Division)

Building- 00423, Office 11,
Road 4308 , Block 0343
Mina salman Industrial area.

❖ Hidd Factory

Plot # Ht28a, block #117

Overseas

❖ SAUDI

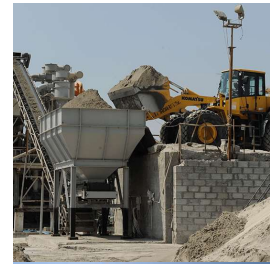
Street #118, 2nd Industrial City, Dammam, *KSA*

❖ INDIA

Mukka, Mangalore, Karnataka.

Our Concrete Products

- Concrete blocks
- Concrete Pavers
- Precast slab
- Ready-mix Concrete
- Artificial Stones
- Crusher Products
- Washed sand
- Kerbs, Flags & Edgings



BUREAU VERITAS
 Certification

AL MANARATAIN COMPANY AND ALI AL SHAAB GROUP W.L.L.

HO: SEHLA, P.O. BOX 926, MANAMA, KINGDOM OF BAHRAIN

This is a multi-site certificate, additional sites are listed on the next page(s). Bureau Veritas Certification Holding SAS - UK Branch certifies that the Management System of the above organisation has been audited and found to be in accordance with the requirements of the management system standards detailed below.

ISO 9001:2015
 Scope of certification

MANUFACTURE AND SUPPLY OF CONCRETE HOLLOW BLOCKS, CONCRETE INSULATION BLOCKS, INTERLOCK PAVING, HYDRAULIC PRESS PRODUCTS (CURB STONE, EDGES, PAVING SLABS), RECONSTITUTED STONE, READY MIX CONCRETE, WASHED SAND AND CRUSHER PRODUCTS, DESIGN, MANUFACTURE, SUPPLY AND INSTALLATION OF PRECAST CONCRETE

Original cycle start date: 18-AUGUST-2014
 Expiry date of previous cycle: 18-AUGUST-2020
 Recertification Audit date: 13-JULY-2020
 Recertification cycle start date: 09-SEPTEMBER-2020

Subject to the continued satisfactory operation of the organization's Management System, this certificate expires on: 18-AUGUST-2023

Certificate No. MER20.712/UQ Version 01 Revision date: 09-SEPTEMBER-2020

[Signature]

Certification only address: SP/Place, 66 Piccadilly Street, London EY 6JG, United Kingdom
 Local office: Bureau Veritas Bahrain Ltd No. 71, Durrat Al Bahar, Road 3111, Jubail 711, Kingdom of Bahrain

MED-CRS-F-009 Rev 1

MINISTRY OF WORKS, MUNICIPALITY AFFAIRS AND URBAN PLANNING

الوزارة العامة للمدن والتخطيط العمراني

Consultancy & Research Section

Material Compliance Report (MCR) 4338/2021
 (For Ministry of Works project)

Concrete Masonry Blocks Strength Grade 7.5MPa

Material Detail:

- Hollow Blocks Sizes:
 - 1021x1021x200mmx200mmx400mm
 - 1021x418x200mmx100mmx400mm
- Half Blocks 202mmx200mmx200mm & 100mmx150mmx150mm
- Three Quarter Blocks 150mmx150mmx200mm
- Solid Blocks Sizes: 200mmx200mmx400mm
- Insulation Blocks Sizes:
 - Sandwich Blocks (200x300mmx200mmx400mm)
 - Slated Blocks (200x300mmx200mmx400mm)
 - MB Blocks (200mmx200mmx400mm)

Manufacturer: Al Manaratain Company & Ali Alshaab Group W.L.L. (BAHRAIN)
 Applicant: Al Manaratain Company & Ali Alshaab Group W.L.L. P. O. Box 926, Manama, Kingdom of Bahrain

Following MSD standard procedures for assessment and technical evaluations of the above Material, as in compliance with the Ministry of Works' specifications and requirements, we advise as per the following details:

i. **Compliance with Relevant Standards & Specifications**
 Acceptable

ii. **Adequacy for use in Ministry of Works projects**
 Suitable for use with conditions. Please refer to comments below.

iii. **Comments**

- The approval does not cover the issue of thermal insulation and fire resistance properties.
- This approval does not cover the issue on material (masonry) for finished block.
- The Product when tested should adhere to BS EN 1776:2014+A1:2015 and shall always conform to the Standard Specifications for Construction Works - 2018 of the MW projects.
- This compliance report does not in any way relieve the supplier or vendor of their obligations with respect to obtaining the necessary approval of the concerned Project Engineer for a specific project.
- The material will be subject to factory inspection and periodic quality control assessment by the Materials Engineering Directorate personnel.

Date: 17/08/2021
 MAS File #188 / CM202

[Signature]
 A. Alshab, Materials Engineering

EWA
 هيئة الكهرباء والماء
 Electricity & Water Conservation Directorate
 Kingdom of Bahrain

شهادة لتسجيل منتج عزل حراري
Registration Certificate of Thermal Insulation Product
 (Ministerial Order No. 149/2018)

Certificate No: TIP20059 رقم الشهادة:
 Registration Date: 28/11/2020 تاريخ الاصدار:
 Issued to: Al Manaratain Company and Ali Alsheab Gro Kingdom of Bahrain اصدرت الى:
 Product Name: 8" Sandwich Block اسم المنتج:
 Application For: Wall الاستخدام في:
 Manufacturer Name: Al Manaratain Company and Ali Alsheab Gro Kingdom of Bahrain اسم المصنع:
 Valid Until: 30/11/2022 تاريخ الصلاحية:

Description	Product Details / تفاصيل المنتج
Sandwich Block (400x200x200mm) concrete masonry insulation block with two cavities and 75mm thick expanded polystyrene sheet between the two layers of concrete.	
Density	Concrete: 2400kg/m ³ Bahrain Expanded polystyrene: 30.89kg/m ³
Min Thickness	Sandwich Block: 200mm
Thermal Conductivity (k)	0.125 W/mK
Thermal Transmittance / Conductance (C)	0.6255 Wm ² /C

Conditions:

- The above thermal insulation product is to be used as described above, provided the overall U-value for the wall does not exceed 0.52 W/m²/C.
- The owner should take the necessary precautions to ensure proper storage and installation of the product to protect from moisture and direct sunlight.
- The owner of this product is responsible of ensuring that the product is carried out by him or an approved applicator, for supplying all the accessories associated with it, and for any consequences that may result from the use of the product.
- The owner of this product is responsible of ensuring that the expanded polystyrene sheets are properly fit and tightly installed between the layers of concrete during manufacturing phase and subsequent transportation, storage and installation of the product.
- All documents published by the owner for the above product should not contradict with the thermal conductivity value stated in this certificate.
- This approval is granted for thermal insulation only. Any additional approvals / permissions required should be sought from the concerned authorities.
- The TIJ should not be held responsible for any consequences that may result from the use of this product.
- The TIJ reserves the right in future to request additional documents and to withdraw its approval of the above if any variations are noticed.

Electricity & Water Conservation Directorate
 Electricity Conservation Section

الوزارة العامة للكهرباء والماء
 Section of Electricity Conservation

تحت إشراف مدير الشؤون الهندسية والبيئية
 تحت إشراف مدير الشؤون الهندسية والبيئية
 P.O. Box: 2, Manama, Kingdom of Bahrain. Tel: +973 17590097 Fax: 17591267
 P.O. Box: 2, Manama, Kingdom of Bahrain. Tel: +973 17590097 Fax: 17591267



Service offered – Fabrication Division

- **ARCH ROOF SYSTEM**
- **STRUCTURAL STEEL FABRICATION**
- **LIGHT GAUGE STEEL BUILDING SYSTEM**
- **STAINLESS STEEL FABRICATION**
- **TEMPERED & QUENCHED WEAR RESISTANT PLATES**
- **WELD CLADDED WEAR RESISTANT PLATES**
- **SPECIAL WELDING SERVICE FOR WEAR & TEAR APPLICATION**

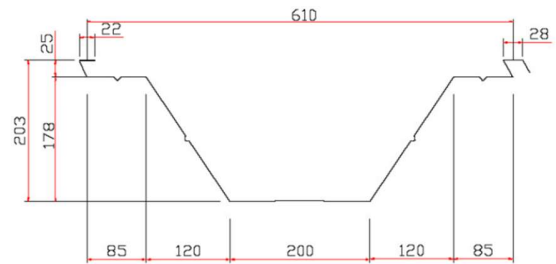
Arch Roof System

Free standing, self supporting arch roof system from as narrow as 4m up to as wide as 20 m with sheet thickness ranging from 0.8 mm up to 1.2 mm. The demanding factors for the arch roof shall be flexibility, speed & efficient installation, less maintenance, excellent drainage, water proof seamed joints without screws, sheet profile to withstand wind load etc.,





Our State of Art Arch roof Profiling Machine



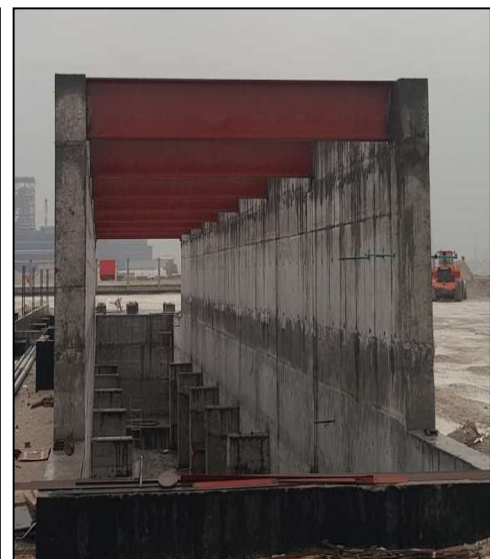
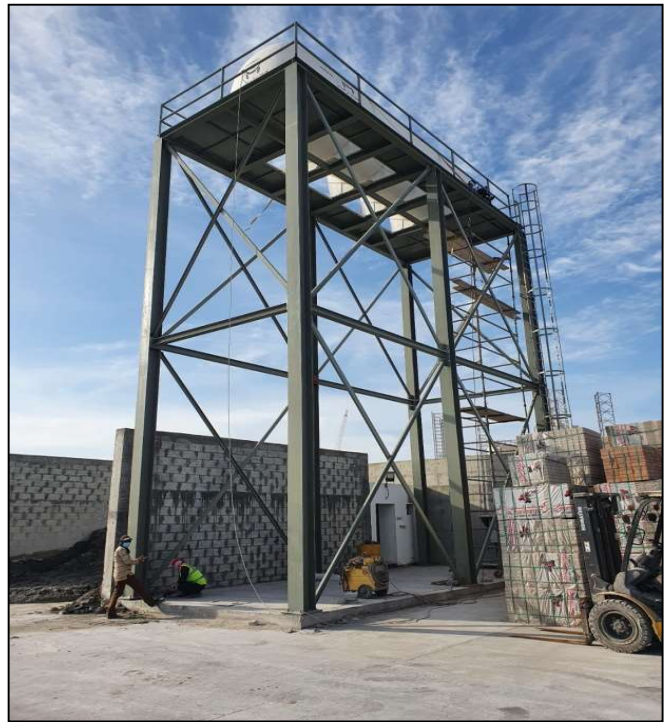
Cross Section profile

Salient features

- Flexible Design
- Durable
- No maintenance
- Water proof & good corrosion resistant
- Quick lead time
- Economical

Structural Steel Fabrication

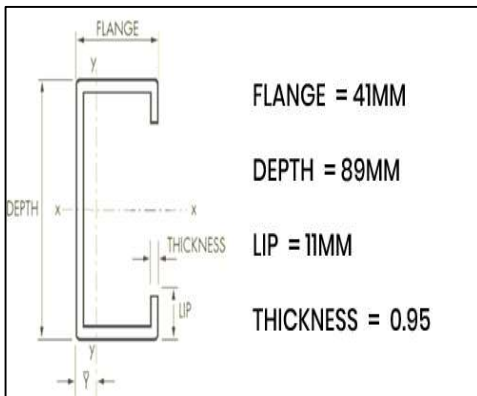
We have experienced team and latest technology to cater the requirement for any kind of projects viz. **structural steel fabrication, storage tanks, truck body and tanks, Steel stairs & platforms, Pre-Engineered buildings machining requirements associated to fabrication etc.,**. We can handle jobs of light, medium & heavy structures at our state of the art facility located at **Minasalman**.





Light Gauge steel building system

We have state of the art machine with latest 3D modelling software to design & manufacture high quality LGS frames. We use structural grade Galvanized steel coils, which are shaped using roll forming technology to get “C” shaped profile elements. These individual elements are assembled as per the design to create structural members like walls, beams, roof truss & joist etc. They can be produced in large quantities and at high speed with consistent quality and precision.



Salient features

- Light weight alternate to conventional building
- Process of installation is easy and fast
- More carpet space.
- Water proof & Fire resistant.
- Clean construction.



Stainless steel fabrication

We fabricate stainless steel parts viz. storage tanks, Truck mounted water tanks, ducts, pipe lines also machined components. We have experienced team is stainless steel fabrication of various grades of SS 304, 304 L, 316, 316 L.



THIS PICTURE IS TAKEN FROM INTERNET



THIS PICTURE IS TAKEN FROM INTERNET



THIS PICTURE IS TAKEN FROM INTERNET



THIS PICTURE IS TAKEN FROM INTERNET

Quenched & tempered wear resistant plates

We are doing fabrication works with quenched and tempered wear resistant plates for various applications with abrasion and severe impact for cement & concrete, steel, aluminium smelters, mining & excavation industries. These plates are workshop friendly which can be rolled, bend and machined as per the requirement. These plates are available in the Hardness range **400, 450 & 500 HB** with toughness at the range of **1200 – 1400 Mpa** and sizes are 2m x 6m with thickness from **4mm -30 mm**. These plates are also available for sale.



Applications:

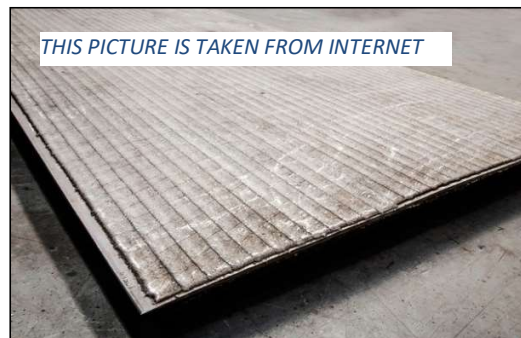
Hopper Liners, Chutes, Crusher liners, excavator buckets, Concrete mixer liners & discharge chutes, Dredging pipe liners, pump casing liners, ducts & pipes Etc.,

Advantages:

- 4-5 times tougher than the Mild steel and hence suitable for heavy impact
- Last 3 times longer vis-à-vis mild steel plates.
- Smooth surface finish enables easy flow of material.
- Can be machined and bent.
- Uniform hardness throughout the thickness and hence can be used until final wear out with same property.

Weld clad wear resistant plates

Hard facing weld over lay composite plates are available at hardness range from 52 -67 HRC with various alloying combination to cater mild to severe abrasion & impact wear areas. The major hard facing element shall be Chromium carbide in addition to that other alloying element shall be Nb, V, Mo, Si, B etcfor different applications. We are manufacturing wear parts out of these plates and these plates also available for sale in various size & thickness.



Applications:

Concrete mixer liners and discharge hoppers, dredging suction pump various other applications for steel plants, cement and mining industries.

Advantages:

- Last 10 times longer vis-à-vis mild steel plates.
- Easy to roll and bend.
- Applicable for severe erosion and mild impact.

Special welding service for wear & tear application

We can provide you solution for wear & tear with special hard facing welding consumables for various applications for cement, steel and aluminum industries.



THIS PICTURE IS TAKEN FROM INTERNET



THIS PICTURE IS TAKEN FROM INTERNET

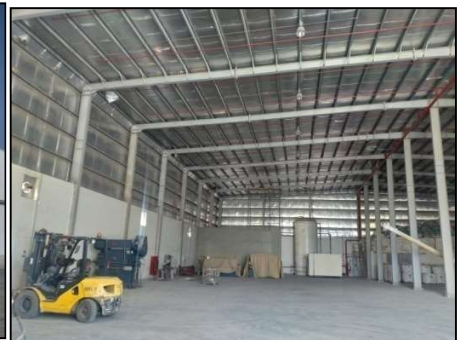


THIS PICTURE IS TAKEN FROM INTERNET



THIS PICTURE IS TAKEN FROM INTERNET

Facility & Machineries



Covered Space: Approx 2200 m2

Our Strength

- ❖ Long and proven history in kingdom of bahrain
- ❖ Experienced & Qualified manpower
- ❖ State Of The Art Facility & Machinery
- ❖ Dedicated Design team with software

P.O. Box 926, Manama, Kingdom of Bahrain. Tel: +973 17590097, Fax 17591267 CR No: 816-14
e-mail : alshaab@batelco.com.bh Web: www.almanaratain.com

List of Machineries

- ❖ Press bending machine.
- ❖ Shearing Machine
- ❖ Radial drilling
- ❖ Welding Machines
- ❖ CNC Profile cutting machine
- ❖ Lathe Machine
- ❖ Milling Machine
- ❖ Shaping Machine.
- ❖ Arch roof profiling machine.
- ❖ In-house mobile crane up to 50 ton capacity.
- ❖ Overhead crane- 10 ton (Aker Facility)

Contact:

E-mail: vishnu@almanaratain.com; alshaab@batelco.com.bh

Mob: +973 36055357; Direct: 17590097



P.O. Box 926, Manama, Kingdom of Bahrain. Tel: +973 17590097, Fax 17591267 CR No: 816-14
e-mail : alshaab@batelco.com.bh Web: www.almanaratain.com